

# GE Albeo™ Industrial Conversion Charts

Based on initial lumens

Energy savings breakdown for traditional lamp to LED conversion  
**GE Lumination™ ABV3 Series LED Fixture.**

Traditional Lamp

GE Lumination™ ABV3 Series

**High Bay**  
 175W HID  
 200W Input



**75%**  
 Energy Savings



9,000 Lumens		Lifetime Savings
Std. Efficacy	50W	\$1,655
High Efficacy	46W	\$1,700

**High Bay**  
 250W HID  
 290W Input



**77%**  
 Energy Savings



12,000 Lumens		Lifetime Savings
Std. Efficacy	68W	\$2,345
High Efficacy	61W	\$2,415

**High Bay**  
 400W HID  
 460W Input



**76-81%**  
 Energy Savings



18,000 Lumens		Lifetime Savings
Std. Efficacy	109W	\$3,675
High Efficacy	88W	\$3,900

**High Bay**  
 6L T5HO  
 350W Input



**61%**  
 Energy Savings



24,000 Lumens		Lifetime Savings
Std. Efficacy	137W	\$2,275
High Efficacy	122W	\$2,425

**High Bay**  
 750W HID  
 840W Input



**74%**  
 Energy Savings



36,000 Lumens		Lifetime Savings
Std. Efficacy	221W	\$6,275
High Efficacy	190W	\$6,600

**High Bay**  
 850W HID  
 955W Input



**70%**  
 Energy Savings



48,000 Lumens		Lifetime Savings
Std. Efficacy	284W	\$6,775
High Efficacy	248W	\$7,125

**High Bay**  
 1000W HID  
 1100W Input



**68%**  
 Energy Savings



60,000 Lumens		Lifetime Savings
Std. Efficacy	360W	\$7,650
High Efficacy	314W	\$8,150

These recommendations are based on practical experience. Customers are encouraged to have a full lighting layout review if they have concerns about light levels and beam distribution. Savings estimates based on \$0.10 per kWh @ 5760 burn hours per year (16 hrs. per day).

# GE Albeo™ Industrial Conversion Charts

Based on initial lumens

Energy savings breakdown for traditional lamp to LED conversion  
**GE Lumination™** ALV2, ALC6 & ALR2 Series LED Fixture.

Traditional Lamp

**GE Lumination™** ALV2, ALC6 & ALR2 Series

**4' Linear**  
 (1-F32 T8)  
 31-55W



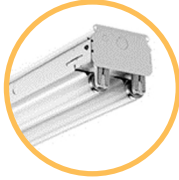
**26-58%**  
 Energy Savings

**ALV2** 4ft - 2,000 - 8,000Lm  
**ALC6** 4ft - 2,000 - 10,000 Lm  
**ALR2** 4ft - 3,000 - 10,000 Lm

**ALV2**  
 14W - 129W  
 131 LPW - 160 LPW



**4' Linear**  
 (2-F32 T8)  
 53-73W



**28-48%**  
 Energy Savings

**ALV2** 4ft - 2,000 - 8,000Lm  
**ALC6** 4ft - 2,000 - 10,000 Lm  
**ALR2** 4ft - 3,000 - 10,000 Lm

**ALC6**  
 14W - 173W  
 120 LPW - 160 LPW



**8' T8 Linear**  
 (1-F96 T8)  
 91W



**55%**  
 Energy Savings

**ALV2** 8ft - 4,000 - 16,000Lm  
**ALC6** 8ft - 4,000 - 20,000 Lm  
**ALR2** 8ft - 4,000 - 20,000 Lm

**ALR2**  
 14W - 174W  
 127 LPW - 164 LPW



**8' T8 Linear**  
 (2-F96 T8)  
 142W



**47%**  
 Energy Savings

**ALV2** 8ft - 4,000 - 16,000Lm  
**ALC6** 8ft - 4,000 - 20,000 Lm  
**ALR2** 8ft - 4,000 - 20,000 Lm

**8' Linear**  
 (4-F32 T8)  
 108-145W



**31-48%**  
 Energy Savings

**ALV2** 8ft - 4,000 - 16,000Lm  
**ALC6** 8ft - 4,000 - 20,000 Lm  
**ALR2** 8ft - 4,000 - 20,000 Lm

**current**  
 powered by GE

All trademarks are the property of their respective owners. Information provided is subject to change without notice. All values are design or typical values when measured under laboratory conditions. Current, powered by GE is a business of the General Electric Company.  
 © 2019 GE.

